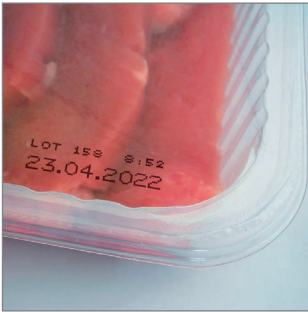
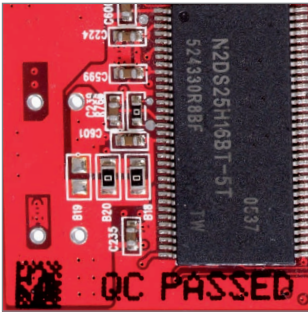


JET2neo



Inkjet printer

With
automatic
nozzle seal
„Sealtronic“

LEIBINGER

JET2neo - high performance in small space

The industrial inkjet printer for all kinds of non-contact marking and coding

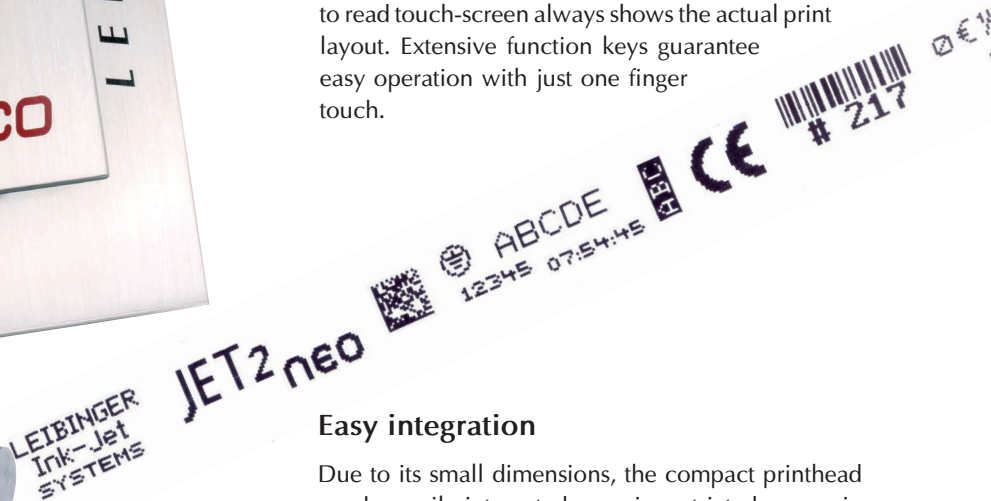
As an all around high-performance printer, the JET2neo is the ideal choice for all daily tasks in coding and marking of most different materials, products and packages.



Fast with multiline text, the LEIBINGER JET2neo prints contactless on all products with the highest quality. Even at an extended distance between printhead and product, a perfect typography is achieved. The extreme short drying time of the ink enables immediate handling of the products.

Use it with the slightest of effort

The Windows® operating system enables an intuitive and error free handling. The user encounters Windows®-typical functions such as drag & drop or pull-down menus and thus can create print jobs immediately and easily. During production the easy to read touch-screen always shows the actual print layout. Extensive function keys guarantee easy operation with just one finger touch.



Easy integration

Due to its small dimensions, the compact printhead can be easily integrated even in restricted spaces in every existing production line. For quick and easy integration, the JET2neo comes with all up-to-date interfaces such as Ethernet, USB and digital inputs and outputs.



Highest quality

Absolute reliability is the main priority for LEIBINGER. Developed and produced in Germany, the JET2neo is a robust inkjet printer with the latest technology "made in Germany", with stainless steel cabinet and shock proof printhead. High class components, well-engineered technologies and best manufacturing practices guarantee highest lifetime and reliability for industrial use.



Solutions for 1001 demands

The **JET2neo** prints a multitude of fonts, all current barcodes / 2D-codes and comes with numerous functions such as date-, time- and counter function, automatic best-before date as well as the possibility to process external printing data. Logos, graphics can also be created directly on the display.

Long service intervals - fair and transparent

In the **JET2neo**, no cost-intensive all-inclusive exchange is carried out. In case of need, single prefabricated parts can easily be exchanged. For scheduled maintenance only a few reasonable parts are replaced.

Efficiency

The lowest consumption of solvent is guaranteed by the solvent recycling system **EcoSolv**. In addition to this, no cost-intensive compressed air is needed. These are important factors for the efficient use of the **JET2neo** inkjet printer.

In favor of the environment



To be very much in the philosophy of ecology, the **JET2neo** fulfills all current requirements such as REACH and RoHS. The low power consumption makes the **JET2neo** energy saving and preserves our resources and the environment.



One **JET2neo** uses only one third of the energy of a standard light bulb.

Permanent availability

The automatic nozzle seal LEIBINGER "Sealtronic" always guarantees immediate availability of the **JET2neo**. It reliably prevents the drying of ink in nozzle and suction tube – even after long-term shut-downs of the printer.

No cleaning – no drying – always ready to print.

1000 times well-proven

The nozzle seal "Sealtronic" works like ...

...a can of lacquer, being closed airproof with a lid.

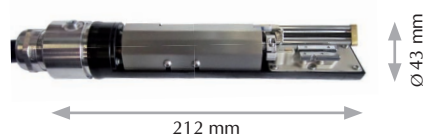
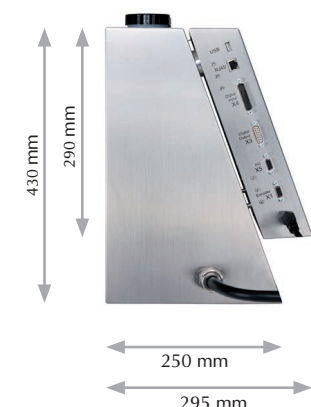
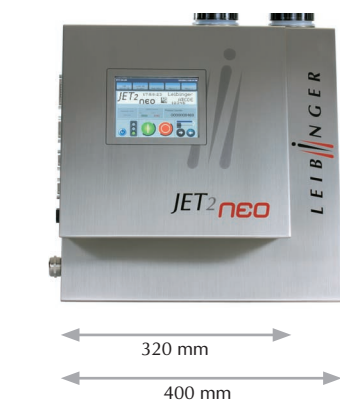
...with airproof lid, the lacquer can never dry up!

...without the airproof lid, the lacquer is useless in no time.

Automatic nozzle seal "Sealtronic"



Technical specifications



Print performance/functions

- Printing height 1.2 to 11 mm, depending on nozzle size and head type
- Country and industry-specific fonts, e. g. Arabic, Cyrillic, Chinese, Persian
- Fonts: from 5x5 to 24x18 dots, special fonts, tower printing
- Multiline fonts (1 to 3 lines)
- Fonts and graphics can be free positioned and combined
- Proportional function for all fonts
- Font height and font width adjustable
- All major barcodes and DataMatrix-Codes (ECC200), GS1 DataMatrix (EAN/ECC)
- Time, auto-adjustable date, auto-adjustable expiration date, weekdays, calendar weeks, julian calendar, shift identification
- Replacements: all date, time and counter functions can be replaced and user-programmed
- Three individually programmable counters, consecutive numbering, production counter, meter marking
- User-programmable graphics/logos can be created in the integrated editor
- Multistage contrast and bold function, print repetition, print delay, backward print, rotation/mirroring of font, inverse, reverse and alternating prints (object-related)
- Dynamic backward printing, for traversing lines
- "External text" function (printing of external data via interface)
- Stop function after reaching predefined amount

Data administration/security

- Storage of countless jobs and graphics
- Data buffer in case of power failure
- Explorer
- Print jobs saved with printing data and machine parameters
- Data logging
- Up- and download of jobs and graphics using USB stick
- Job select (255 jobs selectable from external via digital inputs)

Operation/data input

- 5.7" colour TFT touch-screen display (VGA), background illuminated
- Creating and editing of jobs during production
- Available menu languages: European languages, Arabic, Chinese, Vietnamese, Thai, Korean, Cyrillic, etc.
- Integrated graphic editor
- Alternative control using the data interface (Ethernet)
- Country-specific on-screen keypad
- Operation also by mouse or keyboard
- Comprehensive self-diagnosis and status display with easy-to-understand text, help function, printer status display ("traffic lights")
- Password function and service menu
- Windows-based interface, WYSIWYG-display

Interfaces, inputs/outputs

- Product detector PNP/NPN 24V
- Shaft encoder input for printing speed synchronisation (TTL 5V, HTL 24V, RS422 5V)
- Digital inputs/outputs user-selectable, 5 inputs, 4 outputs
- Printer alarm, low fluid, print ready, print finished, external job selection etc.
- USB port
- Network, Ethernet (RJ45)

LEIBINGER hydraulic system

- Low maintenance, diaphragm pumps with optimised on-time
- Fully automatic viscosity and pressure control
- Thermally isolated hydraulics
- No external supply of compressed air is required
- Automatic interval function
- EcoSolv - Solvent Recycling System (optional)

Print head

- Gutter sensor
- Flexible umbilical, length 3 m
- Stainless steel body
- Fully automatic nozzle and gutter seal
- Fully automatic drop charging, drop break off
- Inkjet control
- Upside down - 360° assembly
- Safety switch for print head locking
- Option: Head ventilation

Fluid reservoirs

- Capacity of the pressureless ink and solvent tanks is 1.3 qt
- Refillable while printing
- Automatic level control

Inks

- Several dye-based inks and soft pigmented inks
- Fast drying inks (<1sec)
- Ketone inks, MEK-free inks, alcoholbased inks
- Ink colours (black, yellow, red, blue, etc.)
- Temperature- and transfer-resistant inks
- Security inks, colour changing inks, adhesive inks, alcohol- and sterilisation-resistant inks
- Food packaging inks
- Customized inks

Cabinet, dimensions and weights

- Weight print head: 1.5 kg
- Weight cabinet: 17 kg
- Protection class: IP 54

Supplies and environmental conditions

- 100 V-240 V, 50-60 Hz, max. 40 VA
- Temperature range +5°C to +45°C
- Relative humidity max. 90%, non-condensing
- No external air pressure necessary

Accessories

- Product detector, shaft encoders, printer stand, print head bracket, alarm lamps, etc.
- Software: remote controlled via external software control

Errors and changes reserved. All logos and brands used are registered trademarks or brands of the manufacturer.

LEIBINGER

Paul Leibinger GmbH & Co. KG
Daimlerstr. 14
D-78532 Tuttlingen
Tel. +49 (0) 74 61 / 92 86 - 0
Fax +49 (0) 74 61 / 92 86 - 199

www.leibinger-group.com
info@leibinger-group.com



Local distributor contact: